

Home office

By Ali Morris, WGSN-homebuilidlfe, 23 May 2012

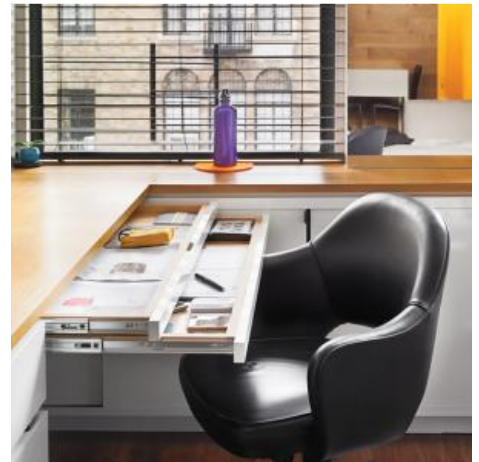
With telecommuting and the round-the-clock work day a growing reality at the workplace, home offices are an essential part of the urban home. While the space does not have to be large or permanent, it does have to consist of most of the functionalities of a traditional workspace. The luxury of working in your own home is a fair trade for the space constraints.



Yuko Shibata, Tokyo



Jeff Wardell and Claudia Sagan, San Francisco, California



Michael Pozner, New York



Mathieu Vinciguerra, Paris



Jimmy Schonning, Stockholm



Chelsea and Arthur Jackson, Chicago

Multifunctional

Rather than highly complex designs, the most effective multifunctionality in the home office is one with choices. Assemble a custom desk with the pieces provided by Studio Gorm's Wood Peg system for a truly multifunctional design.



Wood Peg system by Studio Gorm



Chandlo Dressing Table by Doshi Levien



Scriba by Patricia Urquiola for Molteni & C



Winding Tower 01 desk by Mieke Meijer

Versatile

Flat-pack, self storage and modularity are key in the versatile home office. A folding chair that collapses completely flat could be stored under a bed.





Strates System by Mathieu Lehanneur



Strates System by Mathieu Lehanneur

Compact

Self-contained workstations are the most important advancement in compact home offices. Koloro Desk Workspace by Torafu Architects is a prototype of what a private, urban home office may look like some day.



Desk Box by Arco



Desk Box by Arco



Koloro Desk Workspace by Torafu Architects



Koloro Desk Workspace by Torafu Architects



Living Structure by David Hanauer



Pivot by Arco



Tucker Laptop Table by CB2

Desks: trend analysis

By Heloisa Righetto, WGSN-homebuildlife, 24 August 2012

As user-friendly software connections allow more and more people to work from home, the furniture industry is redirecting its attention to a key element of this space, the desk.

Overview



Kawamura Ganjavian

* SHORTCUTS

- Wall-mounted: compact designs fit for small spaces
 - Versatile: desks with added functions or ingenious design solutions
 - Micro environment: cocoon desks for a sense of privacy
 - Exposed storage: accessories and gadgets become part of the design
 - Material led: natural and playful materials
-
- Space constraints trigger ingenious solutions while there is a shift in aesthetics concerns: office functionalities need to be adapted in order to follow personal styles
 - As the work area is relocated, becoming part of other spaces such as the living room and bedroom, consumers are keen to find products that fit with the existing decoration

Mood

Leisure and work areas come together, there is no physical separation. Decorative objects reach the work space the same way that functional desk accessories have a high aesthetic appeal.



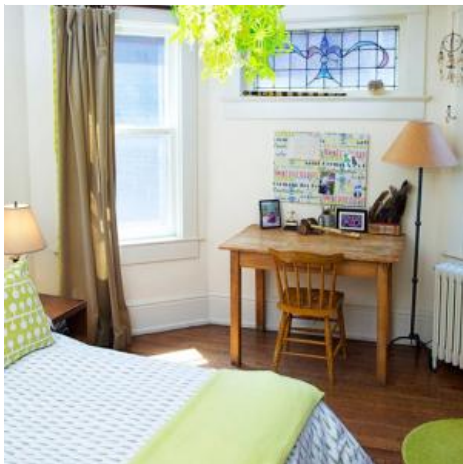
Source: theselby.com



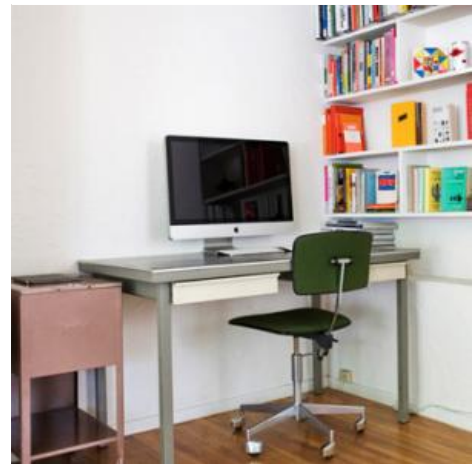
Source: pinterest.com



Source: theselby.com



Source: www.themarionhousebook.com



Source: karatown.blogspot.co.uk



Source: www.moredesignplease.com



Source: rooms-for-the-revolution.tumblr.com



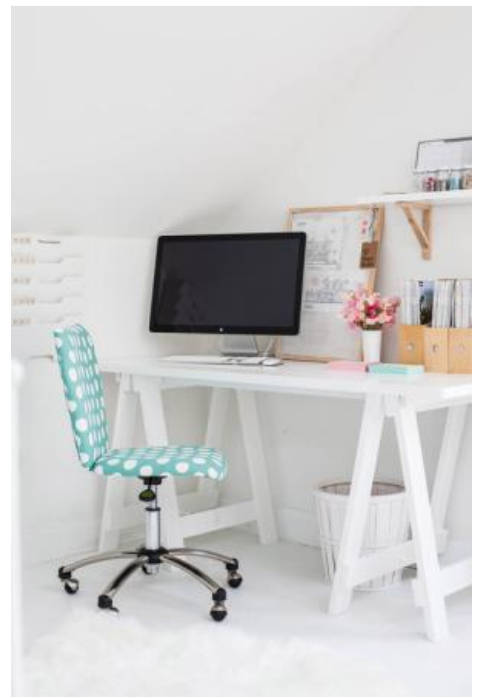
Source: www.designsponge.com



Source: www.designsponge.com



Source: littlebitsoflovley.blogspot.co.uk



Source: www.designsponge.com

Products

Wall-mounted

Compact pieces can be placed in small areas like corridors and entry ways, replacing console tables. Drawers and niches store gadgets and office materials for a quick clean up.



Mash Studios



Margaux Keller



Raw Edges for Arco



Raw Edges for Arco



Kenny Berghe



Phil Procter

- French designer **Margaux Keller** has created a desk with several vertical niches that can be used as an inspiration board, holding artwork, correspondence, mirrors or notes. The concept perfectly relates to the idea of home and office occupying the same space.
- Launched during **Salone del Mobile**, the desk designed by **Raw Edges** for **Arco** uses a simple mechanism to transform a shelf into a work space. Laptop and cable can be stored inside when the desk is closed for a clutter free surface.
- Desks that lean against the wall can be easily moved around: straightforward designs in neutral finishings that adapt to almost any decoration style.

Versatile

Pieces that go beyond their primary function or are specifically designed to be easily moved around.



Tuttotondo



Eddi Tornberg



Jori at IMM Cologne 2012



Note Design Studio



Toon Welling



Jori at IMM Cologne 2012

- Swedish design graduate **Eddi Tornberg** has developed a sustainable workstation which takes the user's movements (such as pressure on the carpet and body heat on the chair) to generate the energy that is used to power laptops, lamps and other appliances.
- Furniture manufacturer **Jori** launched an ingenious and multifunctional armchair: a single movement transforms one of the chair's arms into a laptop table.
- **Toon Welling**'s desk is part of a collection entitled Bound Basics, which uses tensegrity to facilitate the pieces' assemblage. All components are held together by rope only, minimizing packaging and eliminating small fixtures.



Magazin



Lippert Studios for Müller at IMM Cologne 2012



Markus Toivanen



Aberrant Architecture

- Other highlights include [Magazin](#)'s slim desk with storage space and desks with flexible surfaces that open up to reveal hidden niches.

Micro environment

Designers make an effort to tackle the privacy issue and reduce the possibility of the user being distracted by creating micro environments that help to enhance concentration and optimize performance.



Bram Vanderbeke



Lisa Frode



Kawamura Ganjavian



Piergil Fourquie

- Desks become cocoons, almost a room within a room.
- **Kawamura Ganjavian** designed a portable divider which can be placed on any surface, transforming dining tables into private desks.
- **Lisa Frode** incorporated a fabric cover into a wooden structure, functioning as a curtain that can be partially or fully opened.



Roberto Giacomucci for Kubedesign



Living Structure by David Hanauer



Torafu Architects



Torafu Architects

- **Torafu Architects'** desk epitomizes this trend: the cube structure functions as a small room with windows that can be opened to support plant pots, tea cups and lamps.
- Personalisation: stimulate users to decorate and personalise the desk by adding extra surfaces and niches.

Exposed storage

Paper and accessories are incorporated into the design.



Alessandro Busana



Mathieu Lehanneur for Objekten



Elodie Elsenberger



Conran Range at Marks & Spencer



Mieke Meijer

- Deconstruction: [Alessandro Busana](#) added an unexpected element to his desk by simply cutting part of tabletop, revealing the material and creating storage space.
- Multifunctional structure: modular storage is part of [Mathieu Lehanneur's](#) desk for [Objekten](#).
- Elodie Elsenberger and Mieke Meijer added niches to highlight desk accessories and decorative objects, following the "[art of display](#)" [trend recently reported](#) by WGSN-homebuildlife.

Material-led

Form follows material: from playful tabletop innovations to natural and sustainable solutions.



Christofer Odmark



Christofer Odmark



Miguel Mestre



Valentin Loellmann



Rie Asaka for DesignSoil

- Wooden statement: a solid oak tabletop is the key feature in [Christofer Odmark's](#) desk, while [Valentin Loellmann](#) used hazel branches to build his piece.
- Paper sheets become a working surface in [Miguel Mestre's](#) piece, inviting the user to transform the design.
- The apparently smooth tabletop of [Michael Bambino's](#) desk has a series of grooves that transform a hard material into a soft surface. By pushing it away, the user has access to a hidden storage underneath.